

# Oesophageal Doppler Training Morning

6<sup>th</sup> October 2026

University College London Hospital

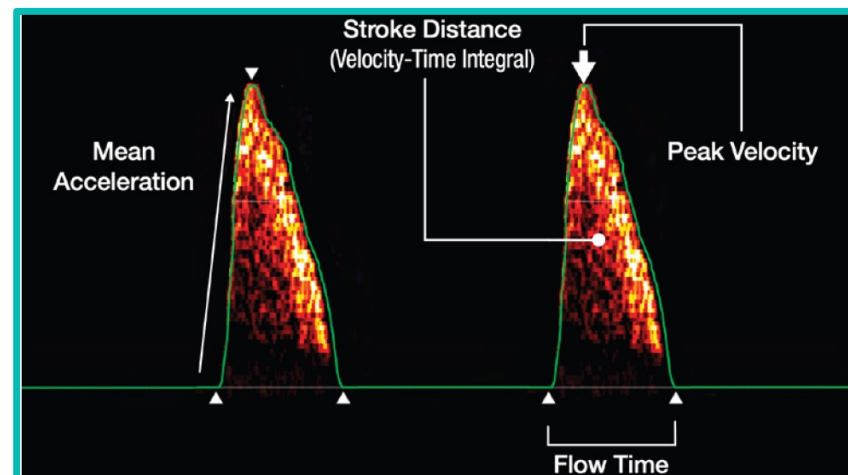
## Prof. Mervyn Singer

- Clinical background
- ICU clinical scenarios / case studies

## Jayne Gay Deltex Medical

### Hands on sessions with training mannequin:

- OD probe insertion and focus techniques
- waveform interpretation
- trouble shooting & handy hints
- clinical scenarios



- 6<sup>th</sup> October 2026, 09:00–1:00pm
- UCLH Education Centre, Seminar Room 2, 250 Euston Road, London NW1 2PG
- Registration: 9:00 to 9:10am
- Refreshments sponsored by Deltex Medical

Scan to Register



Registration is free – but is required for attendance; please scan the QR code or email the Deltex Medical Education Team at: [jayne.gay@deltexmedical.com](mailto:jayne.gay@deltexmedical.com)